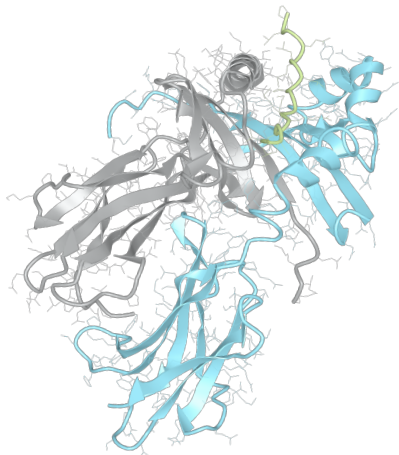


# Product datasheet



## sHLA– DQB1\*05:03bio DQA1\*01:02bio

DQB1\*0503, DQB10503, DQB1\*05, DQB05, DQ5  
DQA1\*0102, DQA10102, DQA1\*01, DQA01

<b>Serological Name</b>	DQ5
<b>Peptide Load</b>	Endogenous
<b>Modification</b>	Unmodified
<b>Conjugation</b>	Biotin
<b>SKU</b>	DQB10503/DQA10102bio

### Product Description

<b>Allele Name</b>	DQA1*01:02 DQB1*05:03
<b>HLA Class</b>	HLA Class II
<b>HLA Gene Locus</b>	HLA-DQ
<b>Alternative Allele Name A Chain</b>	DQA1*0102, DQA10102, DQA1*01, DQA01
<b>Alternative Allele Name B Chain</b>	DQB1*0503, DQB10503, DQB1*05, DQB05, DQ5
<b>Description</b>	Recombinant, truncated Class II soluble Human Leukocyte Antigen (sHLA), naturally folded and glycosylated, loaded with endogenous peptides.
<b>Serological Name</b>	DQ5
<b>Serological Split</b>	DQ1
<b>Allele Frequency [World Population]</b>	
<b>A chain</b>	15.0%
<b>B chain</b>	4.1%

### Associated products

[DQB10503/DQA10102](#)  
[DQB10503/DQA10102pe](#)

## Product Specification

<b>Product name</b>	HLA-DQB1*05:03/DQA1*01:02bio
<b>HLA Species</b>	Human
<b>Host Cell Line Species</b>	Mouse
<b>Clone Designation</b>	EP370-H11
<b>Tail Specification</b>	ZP
<b>Peptide Load</b>	Endogenous
<b>Modification</b>	Unmodified
<b>Conjugation</b>	Biotin
<b>Complexity</b>	Monomer
<b>Protein Format</b>	Recombinant, truncated, zipper-stabilized, soluble, non-modified, biotinylated, endogenously loaded
<b>Storage Temperature</b>	4°C (This product should be stored undiluted)
<b>Form</b>	Liquid
<b>Concentration</b>	300.0 µg/µl
<b>Formulation</b>	PBS/0.02% Sodium Azide
<b>pH</b>	7.4
<b>Purification Method</b>	Affinity Chromatography
<b>Grade</b>	Research Use Only [RUO]
<b>Authentication Verification</b>	Sequence Based Typing

## Protein Sequences

<b>Alpha Chain Sequence</b>	EDIVADHVAS CGVNLQFYG PSGQYTHEFD GDEQFYVDLE RKETAWRWPE FSKFGGFDPQ GALRNMVAVK HNLNIMIKRY NSTAATNEVP EVTVFSKSPV TLGQPNTLIC LVDNIFPPVV NITWLSNGQS VTEGVSETSF LSKSDHSFFK ISYLTFLPSA DEIYDCKVEH WGLDQPLLKH WEPEIPAPMS EVDGGGGGAQ LEKELQALEK ENAQLEWELQ ALEKELAQ
<b>Beta Chain Sequence</b>	RDSPEDFVYQ FKGLCYFTNG TERVRGVTRH IYNREEYVRF DSDVGVYRAV TPQGRPDAEY WNSQKEVLEG ARASVDRVCR HNYEVAYRGI LQRRVEPTVT ISPSRTEALN HHNLLICSVT DFYPSQIKVR WFRNDQEETA GVVSTPLIRN GDWTFQILVM LEMTPQRGDV YTCHVEHPSL QSPTTVEWRA QSESAQSKVD GGGGAQLKK KLQALKKKNA QLKWKLQALK KKLAQ

## Related Products

[DQB10501/DQA10102bio](#)  
[DQB10502/DQA10102bio](#)  
[DQB10301/DQA10201bio](#)  
[DQB10602/DQA10102bio](#)

## Applications

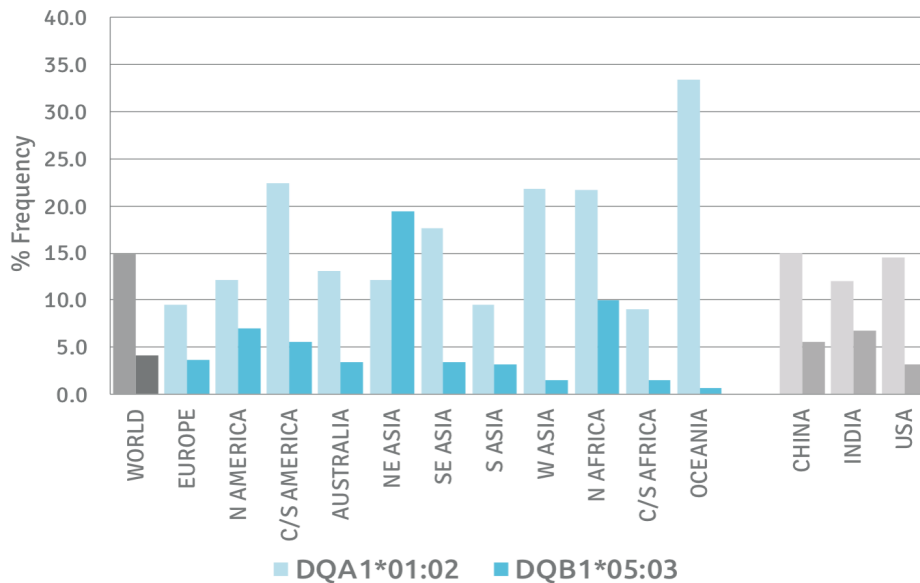
HLA Sandwich ELISAs  
 HLA Direct ELISAs  
 HLA-Sera Antibody Assays  
 HLA Controls in ELISA Assays  
 HLA Assay Standards  
 HLA Blocking Assays  
 HLA Neutralizing Assays  
 HLA Competition Assays  
 HLA Bead Assays  
 HLA Immunization Procedures

## Recommended Antibodies

-

## Allele Frequency

### Worldwide Allele Frequency



Please note:

ALL PRODUCTS ARE FOR RESEARCH USE ONLY. NOT FOR COMMERCIAL USE IN DIAGNOSTIC PROCEDURES.  
 For more information, please visit our Policies section on our website. For licensing inquiries, please contact

[licensing@hlaprotein.com](mailto:licensing@hlaprotein.com)

HLA Protein  
 PURE PROTEIN LLC

